

BATHS SUBWAY 3.0

PRODUCT INFORMATION

1. POSITION



Article number	UBQ180SBW2TDV-01
Article title	Villeroy & Boch Subway 3.0 Rectangular bath, 1800 x 800 mm, White Alpin
Product designation	Rectangular bath
Collection	Subway 3.0
Assembly / Assembly type	built-in installation
Assembly instructions	There is no space for a tap hole behind the overflow., 2 holes are possible to the left or right respectively of the overflow hole
Scope of delivery	1 x rectangular bath , 2 x bath support frame (self-adhesive), adjustable from 130 - 180 mm 1 x matching outlet and overflow. The outlet cover matches the colour of the bath, the overflow is chrome- plated. 1 x Quiet filling of the bath tub with the "SilentFlow" feature in the base of the bath. This cannot be ordered at a later date! The visible parts match the colour of the bath.
Length in mm	1800
Width in mm	800
Height in mm	480
Installation height	<ul style="list-style-type: none"> • Bath: 610 - 660 mm • Profibox 2.0 without system: 625 - 625 mm
Interior depth	480
Weight in kg	43,20
Outlet / outlet	central outlet
Material	Quaryl®
Colour name	White Alpin
With feet/base	Yes
With panel	No
Other material	Outlet cover: Plastic Overflow: Plastic
Other surfaces	Outlet cover: glossy, Overflow: glossy
With overflow	Yes
With bath support	No
Water content	294
Capacity incl. 1 pers	219
Number of people	2

For handle mounting	Yes
Anti-slip class	Anti-slip class A
Following systems are available	<ul style="list-style-type: none"> • [AC] Airpools • [AE] Airpools • [AP] Specialpools • [CC] Combipools • [CE] Combipools • [HC] Hydropools • [HE] Hydropools
Seat unit	2
Technical information	<ul style="list-style-type: none"> • Note: There is no tap hole behind the seat unit • The tap fitting car should be positioned to the left of the overflow, not to the right • NOT suitable for freestanding bath fittings
EAN number	4062373881866

COLOUR

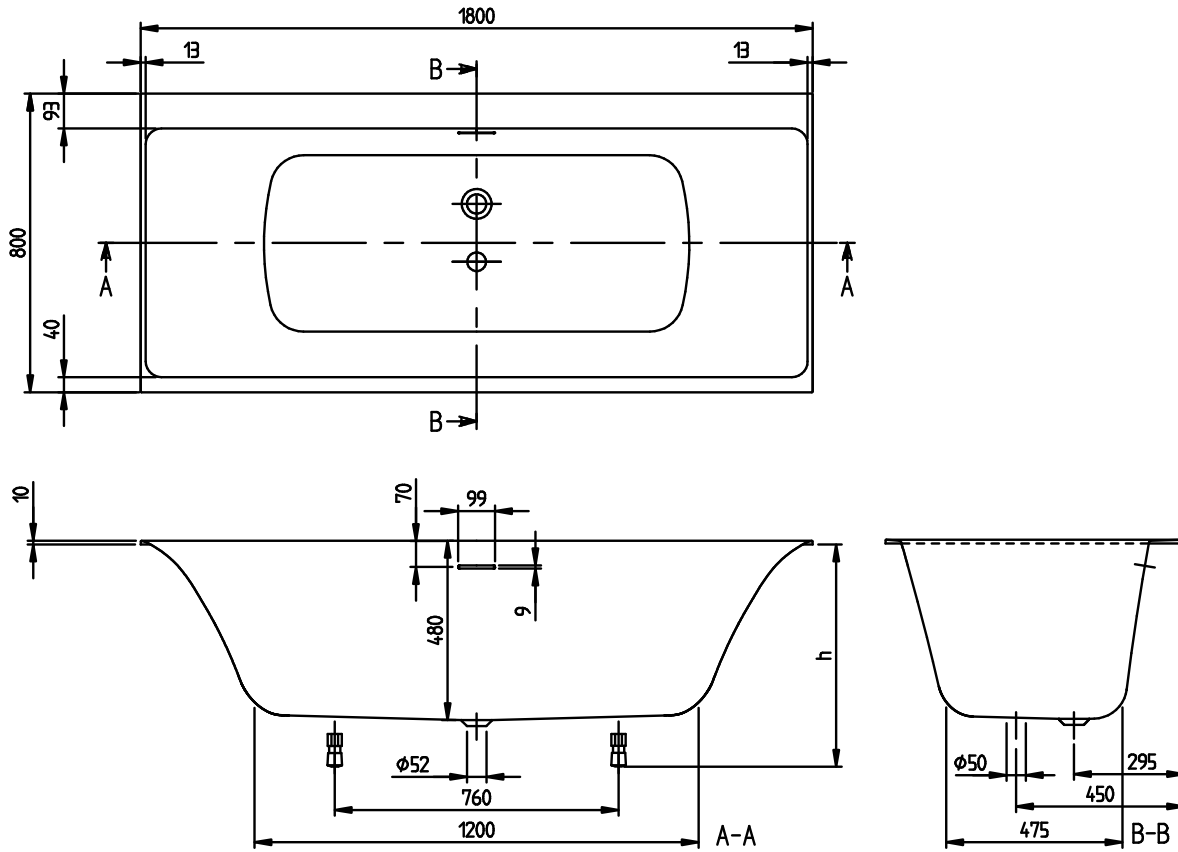
COLOUR DESIGNATION



White Alpin

TECHNICAL DRAWINGS

UBQ180SBW2TDV-01



SUBWAY 3.0 1800 x 800 UBQ180SBW2TD V02/ 28-01-2021	 Villeroy & Boch 1748
---	--